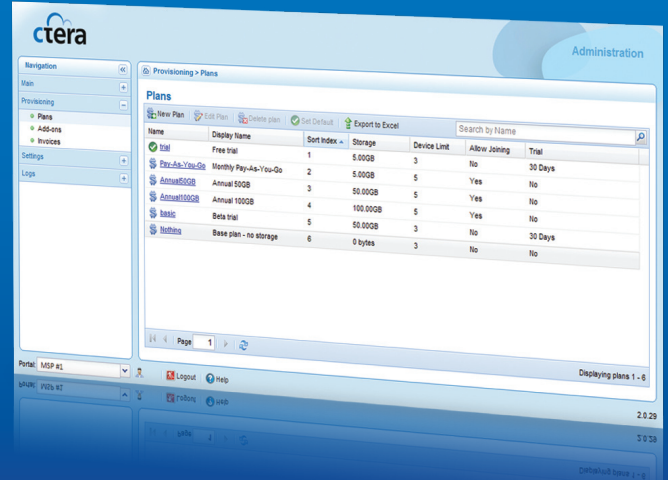




# CTERA Portal™: Cloud Storage Delivery Platform

## Deliver Hybrid Cloud / On-Premises Data Protection and Storage Services

- Rapidly launch and manage self-branded managed services
- Available as Software-as-a-Service (SaaS), or installed in your datacenter
- Works seamlessly with CTERA's Cloud Attached Storage appliances



CTERA Portal enables service providers to deliver managed storage and data protection solutions for SOHO, SMBs and enterprise branch offices, combining the advantages of cloud storage with customer-premises appliances for local speed and access. The CTERA Portal is fast and easy to deploy, and allows VARs, MSPs and ISPs in a multi-tier channel to rapidly deploy a fully-branded solution that creates new, high-margin, recurring revenue streams.

### Cloud Service Provisioning

The CTERA Portal controls all aspects of storage and data protection service provisioning, including user account management, storage quotas, service plans that include prepaid plans, pay-as-you-go and voucher add-ons, real-time monitoring, extensive logging and reporting, as well as automated invoicing. The portal uses open standards to facilitate integration with the service provider's other systems, including service automation and billing platforms.

### Remotely Managed Appliances

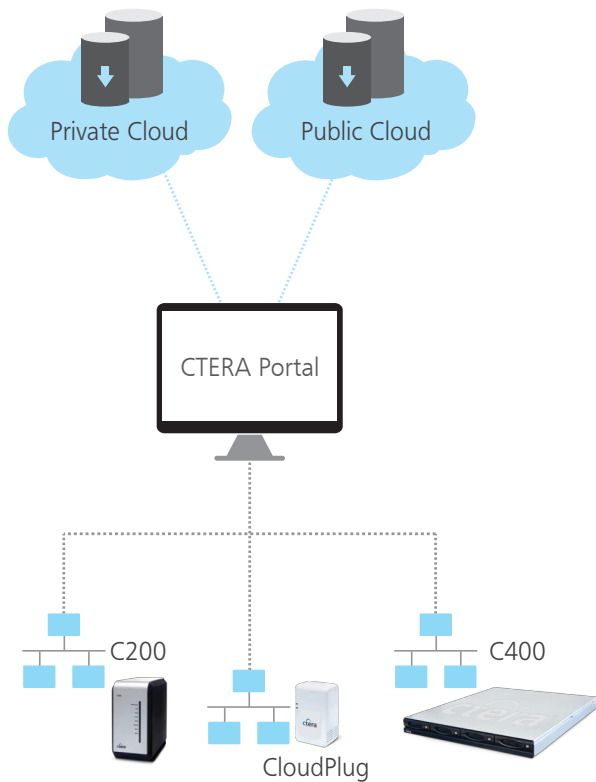
Working in concert with CTERA's Cloud Attached Storage appliances, the CTERA Portal can manage thousands of customer-premises appliances remotely, for easy maintenance and support, including firmware upgrades, status monitoring and storage volume management.

### Flexible Deployment

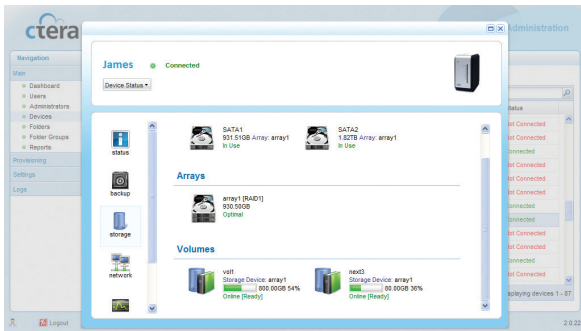
Service providers can choose to install the CTERA Portal as a software platform within their datacenter, using their own storage infrastructure as backend, or using 3rd party cloud providers. Alternatively, those who are making their first steps in the cloud can use a SaaS edition of the CTERA Portal, requiring zero investment in infrastructure.

### Branded Service

Whether in its Datacenter or SaaS editions, the CTERA Portal can be fully branded to the service provider's corporate brand, including all aspects of end-user UI, email communications and invoicing.



The CTERA Portal works seamlessly with customer-premises appliances to deliver superior data protection and performance



Centralized remote management of customer-premises storage appliances with the CTERA Portal

## About CTERA

CTERA™ Networks revolutionizes storage and data protection for SMBs and enterprise branch offices with Cloud Attached Storage®, a hybrid solution that combines secure cloud storage services with on-premises storage appliances for a seamless user experience. CTERA provides a cloud services platform that enables service providers and IT resellers to quickly deliver cloud storage, hybrid local/offsite data protection and collaboration as managed services to their customers. For more information, visit [www.ctera.com](http://www.ctera.com).

	Datcenter Edition	SaaS Edition
<b>Deployment</b>	Installed software	Software-as-a-Service
<b>Storage Backend</b>	Choice of private & public cloud infrastructure, DAS, SAN	Determined by selected MSP
<b>User Account Mgmt.</b>	Yes	Yes
<b>Service Plan Creation</b>	Yes	Yes
<b>Private Branding</b>	Yes	Yes
<b>System Requirements</b>	Linux/Open Solaris server	Web browser only

## Cloud Service Administration

- Customized service plans including prepaid vouchers, pay-as-you-go, add-ons, and time-limited plans
- Cloud storage quota provisioning
- User account and user group management, including user access, subscription plans and quotas
- "Virtual Portals" for partner VARs, MSPs, managed and branded separately (multi-tenant architecture)
- Automated billing and invoicing
- End-user portal UI and email template branding
- Real-time status and usage monitoring
- Extensive event logging and reporting including automated PDF email reports
- REST XML API for integrating billing, service automation, centralized monitoring and other systems

## Remote Appliance Management

- Real-time monitoring of connected appliances
- Remote firmware updates
- Association of device with cloud storage folder
- Detailed event logging

## End-User Portal

- Account settings and administration
- Branded to VAR/MSP corporate identity
- Real-time monitoring of appliance and backup
- Backup restore to appliance or any PC
- Password-protected access using Web browser
- Self-provisioning of additional cloud services
- Remote access to files on the CTERA appliance

## System Requirements

- Web browser: Internet Explorer 7.0, Mozilla Firefox 3.0, Chrome 5.0 or newer

### Datcenter Edition only

- Block storage: Any SAN / DAS storage array, Amazon S3, Rackspace CloudFiles, Nirvanix, Mezeo Cloud Storage Platform
- 64 bit machine (or VMWare instance), 4GB RAM (8GB recommended)
- Operating system: OpenSolaris/Linux

### CTERA Networks US

2225 E. Bayshore Road, Suite 200  
Palo Alto, CA 94303  
Tel: (650) 227-4950

### CTERA Networks Ltd.

24 Imber St., Petah Tikvah  
Israel 49511  
Tel: +972-3-919-2061